

Population Health Trust Advisory Committee



September 1st, 2016

Agenda

- Welcome and Introductions
- Review Previous Notes and Approve
- Review where we started in 2015 and Introduce New Action Framework-David
- Steering Committee Recommendation-Debra Lancaster
- NSACH Update-Lee Che Leong
- Opioid Update-Randy Elde
- Fiscal Sub Committee
- Awards Sub Committee
- Critical Next Steps
- October Agenda



Skagit County Board of Health
Lisa Janicki, Chair
Kenneth A. Dahlstedt, Commissioner
Ron Wesen, Commissioner

Introductions

&

Welcome

Kristin Ekstran, Community Health Planner



POPULATION
HEALTH TRUST
ADVISORY COMMITTEE

Skagit County Board of Health

Lisa Janicki, Chair

Kenneth A. Dahlstedt, Commissioner

Ron Wesen, Commissioner

Review & Approve Notes



POPULATION
HEALTH TRUST
ADVISORY COMMITTEE

Skagit County Board of Health
Lisa Janicki, Chair
Kenneth A. Dahlstedt, Commissioner
Ron Wesen, Commissioner

**Courage is the discovery that you may not win,
and trying when you know you can lose.**



Inspiration Quotes - Day 19
Shyam Bhagat



**POPULATION
HEALTH TRUST**
ADVISORY COMMITTEE

Skagit County Board of Health
Lisa Janicki, Chair
Kenneth A. Dahlstedt, Commissioner
Ron Wesen, Commissioner

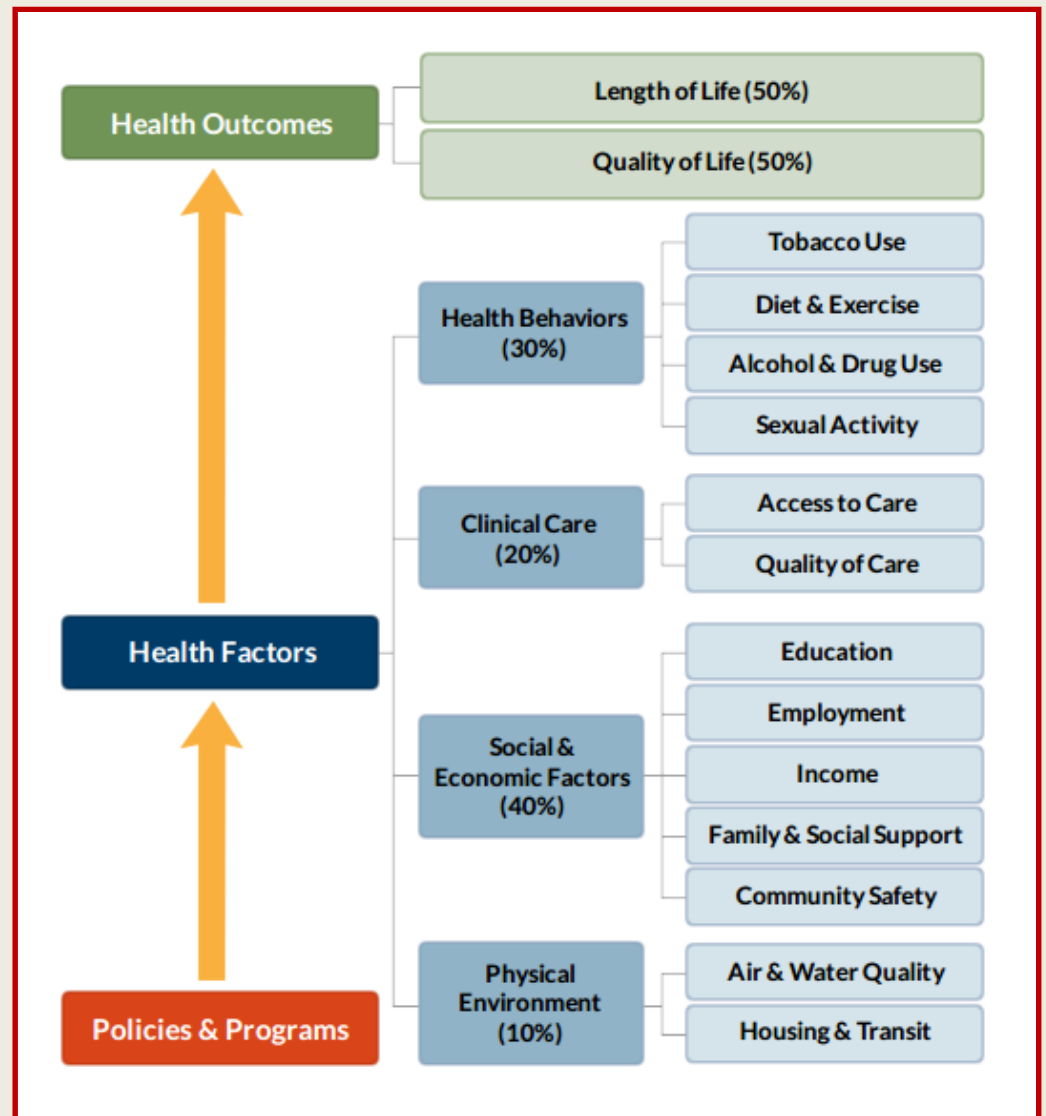
Why Should We Do This Work?

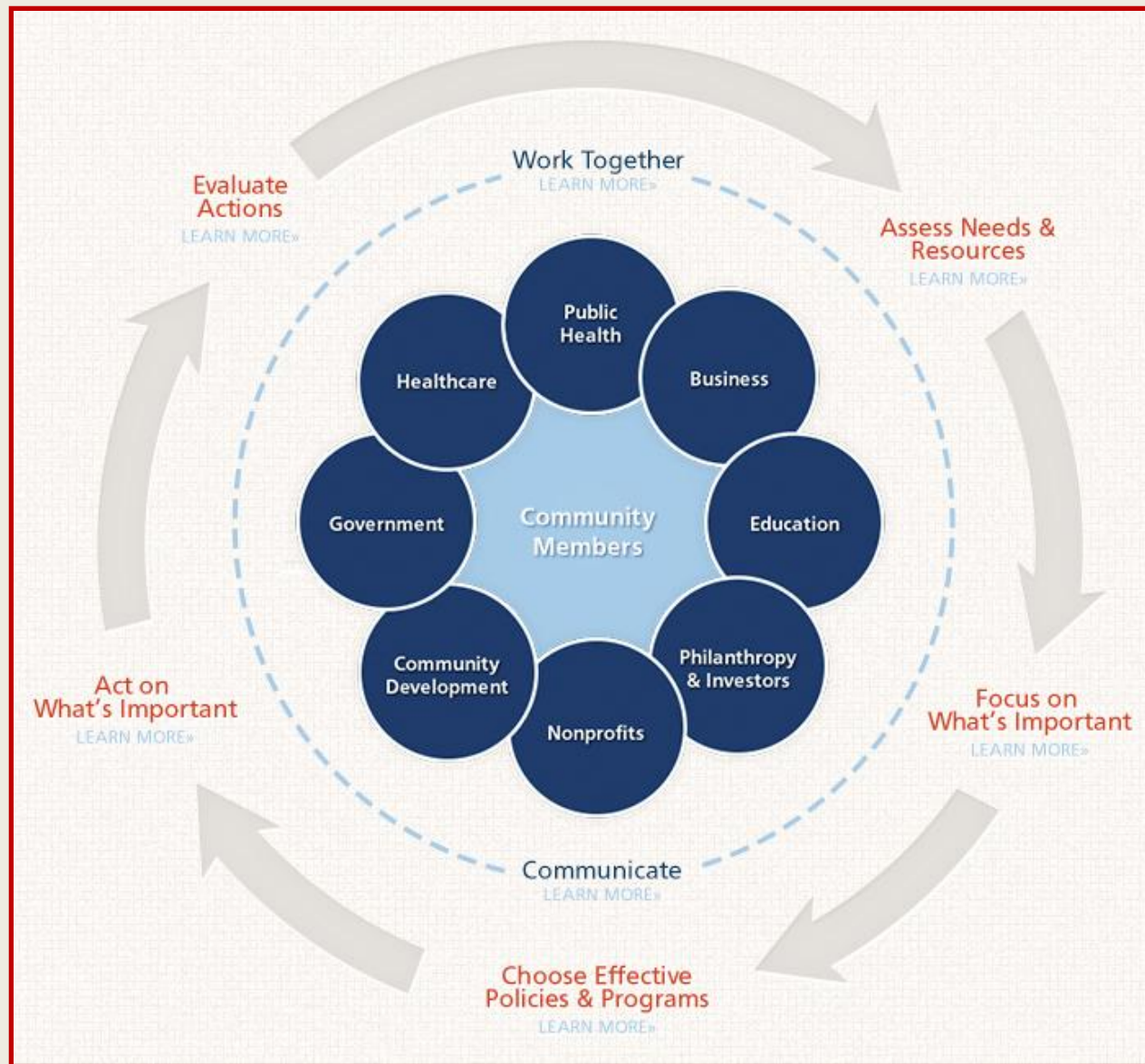
- Affordable Care Act – Triple Aim
- Washington State Health Improvement Plan
- North Sound Accountable Communities of Health
- Better Position Skagit County to Lead Community Efforts



Skagit County Board of Health
Lisa Janicki, Chair
Kenneth A. Dahlstedt, Commissioner
Ron Wesen, Commissioner

Planning Models





**POPULATION
HEALTH TRUST**
ADVISORY COMMITTEE

Skagit County Board of Health
Lisa Janicki, Chair
Kenneth A. Dahlstedt, Commissioner
Ron Wesen, Commissioner

Planning Models



Skagit County Board of Health
Lisa Janicki, Chair
Kenneth A. Dahlstedt, Commissioner
Ron Wesen, Commissioner

Goals of the Population Health Trust

- Evaluate Skagit County Community Health and write an Improvement Plan
- Regularly report findings to the Board of Health
- Identify Action Items that will elevate the health of our neighbors and community members



Skagit County Board of Health
Lisa Janicki, Chair
Kenneth A. Dahlstedt, Commissioner
Ron Wesen, Commissioner

Planning - 2015

Organize and Plan

Vision and Values

Assessment

Strategic Issues
Identified

Goals



POPULATION
HEALTH TRUST
ADVISORY COMMITTEE

Skagit County Board of Health

Lisa Janicki, Chair

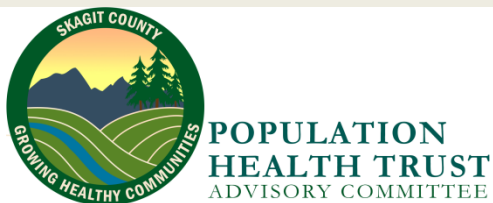
Kenneth A. Dahlstedt, Commissioner

Ron Wesen, Commissioner

Action - 2016

Review Goals

Action Steps



Skagit County Board of Health
Lisa Janicki, Chair
Kenneth A. Dahlstedt, Commissioner
Ron Wesen, Commissioner

Collective Impact

Collective impact is the commitment of important actors from different sectors to a common agenda to solve a specific social problem at scale

Key Conditions:

Common Agenda

Shared Measurement

Mutually Reinforcing Activities

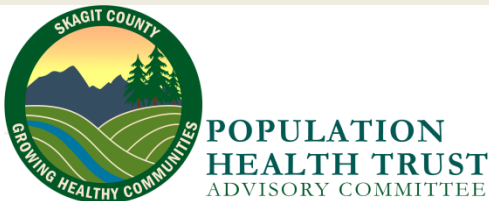
Continuous Communication

Backbone Support



The Practical Playbook **National Meeting**

@pracplaybook | #PPBMeeting



Skagit County Board of Health

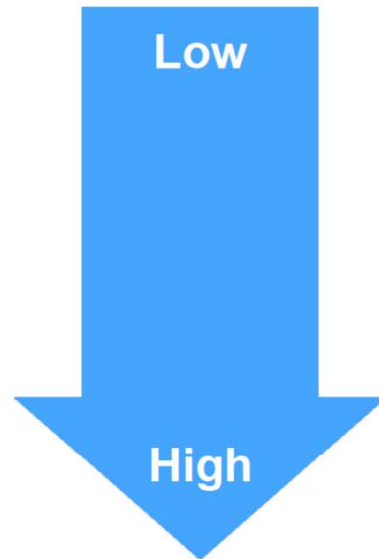
Lisa Janicki, Chair

Kenneth A. Dahlstedt, Commissioner

Ron Wesen, Commissioner

Types of Collaborations

Increasing
Level of
Formality



Networks
Coalitions
Movements
Strategic Alliances
Strategic Co-Funding
Public-Private Partnerships
Collective Impact Initiatives

Source: Grantmakers for Effective Organizations



PRACTICAL PLAYBOOK®
Public Health. Primary Care. Together.®

The Practical Playbook **National Meeting**

@pracplaybook | #PPBMeeting



POPULATION
HEALTH TRUST
ADVISORY COMMITTEE

Skagit County Board of Health

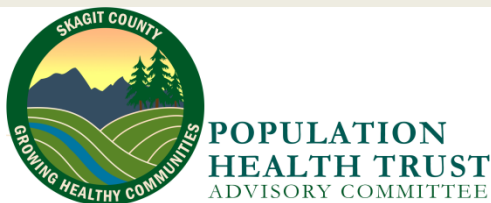
Lisa Janicki, Chair

Kenneth A. Dahlstedt, Commissioner

Ron Wesen, Commissioner

Where are we now?

- Transitioning to Planning
- Started an Opioid Strategic Planning Work Group
- Other Strategic Priorities are pending
- Review and approve new RWJ Framework



Skagit County Board of Health
Lisa Janicki, Chair
Kenneth A. Dahlstedt, Commissioner
Ron Wesen, Commissioner

***Promote Healthy
Active Living
(youth & adults)***

Lowering obesity
Improving nutrition
Increasing physical activity

***Enhance Child &
Family Wellbeing***

Reducing suicide ideation
Marijuana use
Adverse Childhood
Experiences (violence &
abuse)

***Ensure Access to
Essential Health
Care***

Access to Prenatal
Care,
Medical, Dental, MH and
SUD

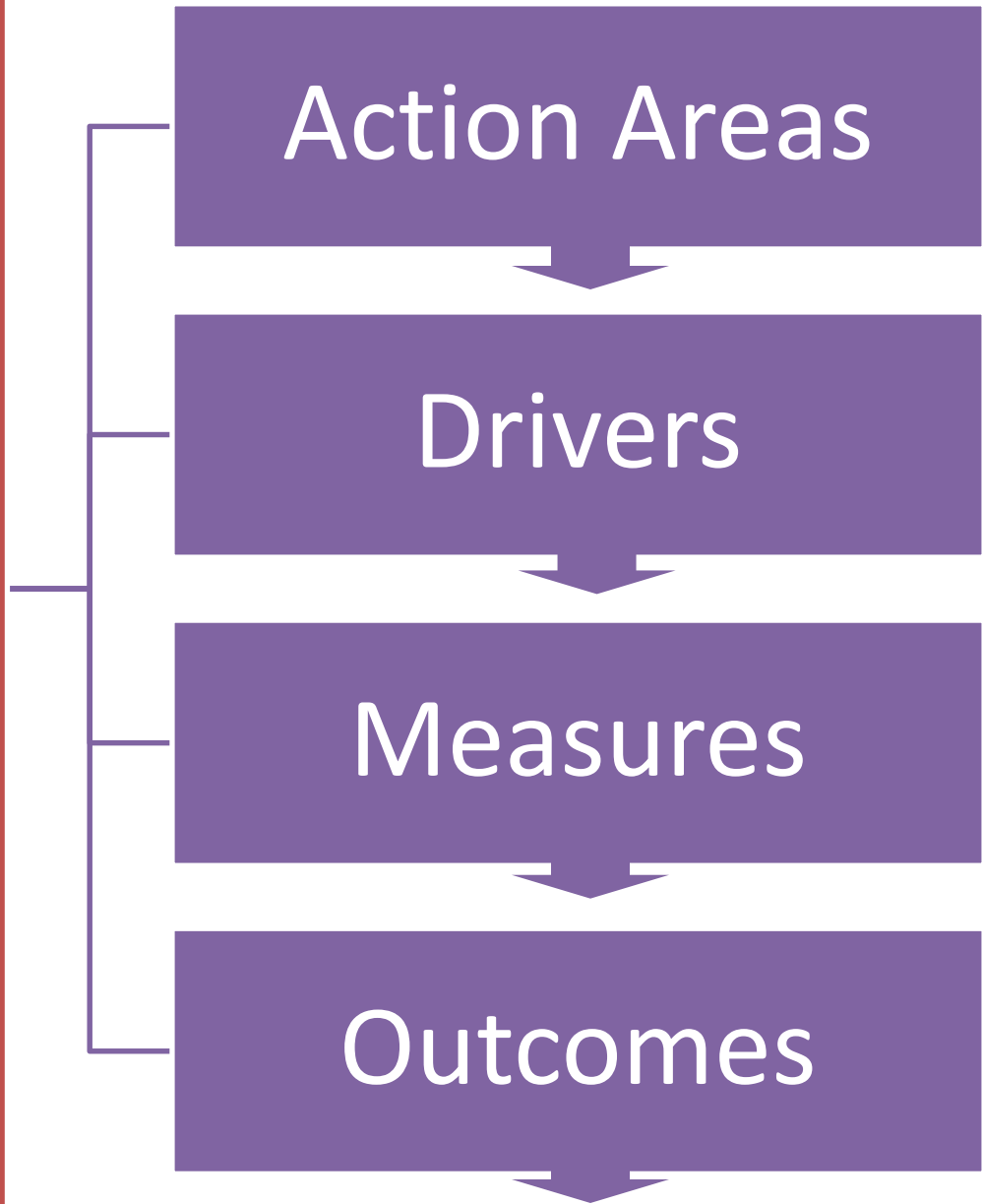
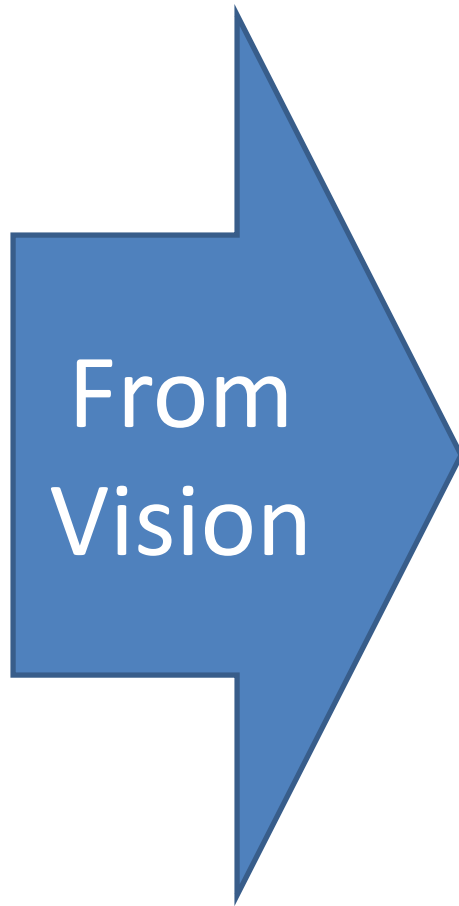
***Reducing the
Incidents of
Opioid Use
Disorders
Planning
Blue-Print***

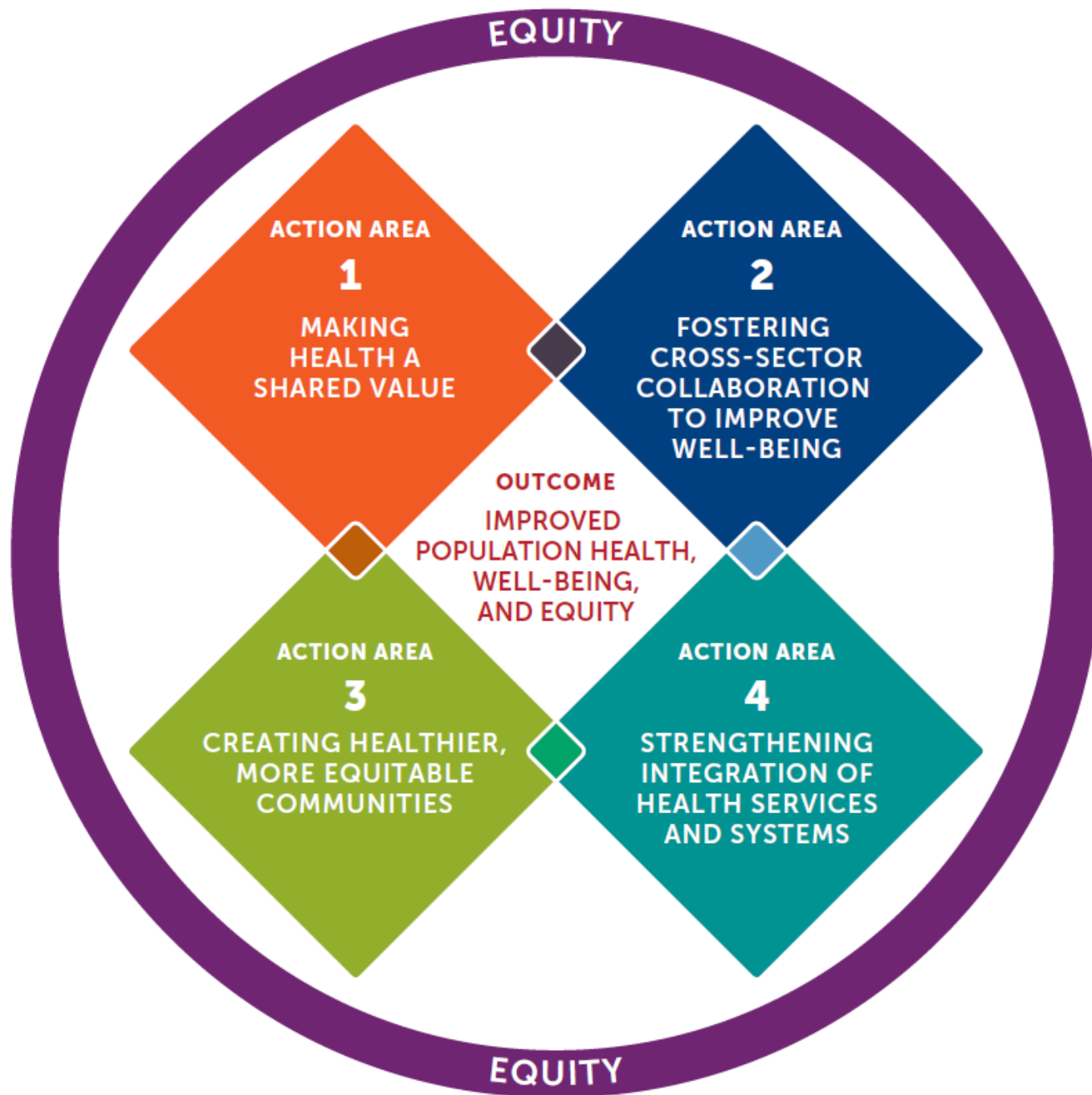
Robert Wood Johnson

Culture of Health Action Framework

Measures to Mobilize a Culture of Health







RWJ Vision

1. Good health flourishes across geographic, demographic, and social sectors.
2. Attaining the best health possible is valued by our entire society.
3. Individuals and families have the means and the opportunity to make choices that lead to the healthiest lives possible.
4. Business, government, individuals, and organizations work together to build healthy communities and lifestyles.
5. Everyone has access to affordable, quality health care because it is essential to maintain, or reclaim, health.
6. No one is excluded.
7. Health care is efficient and equitable.
8. The economy is less burdened by excessive and unwarranted health care spending.
9. Keeping everyone as healthy as possible guides public and private decision-making.
10. People understand that we are all in this together.

Drivers



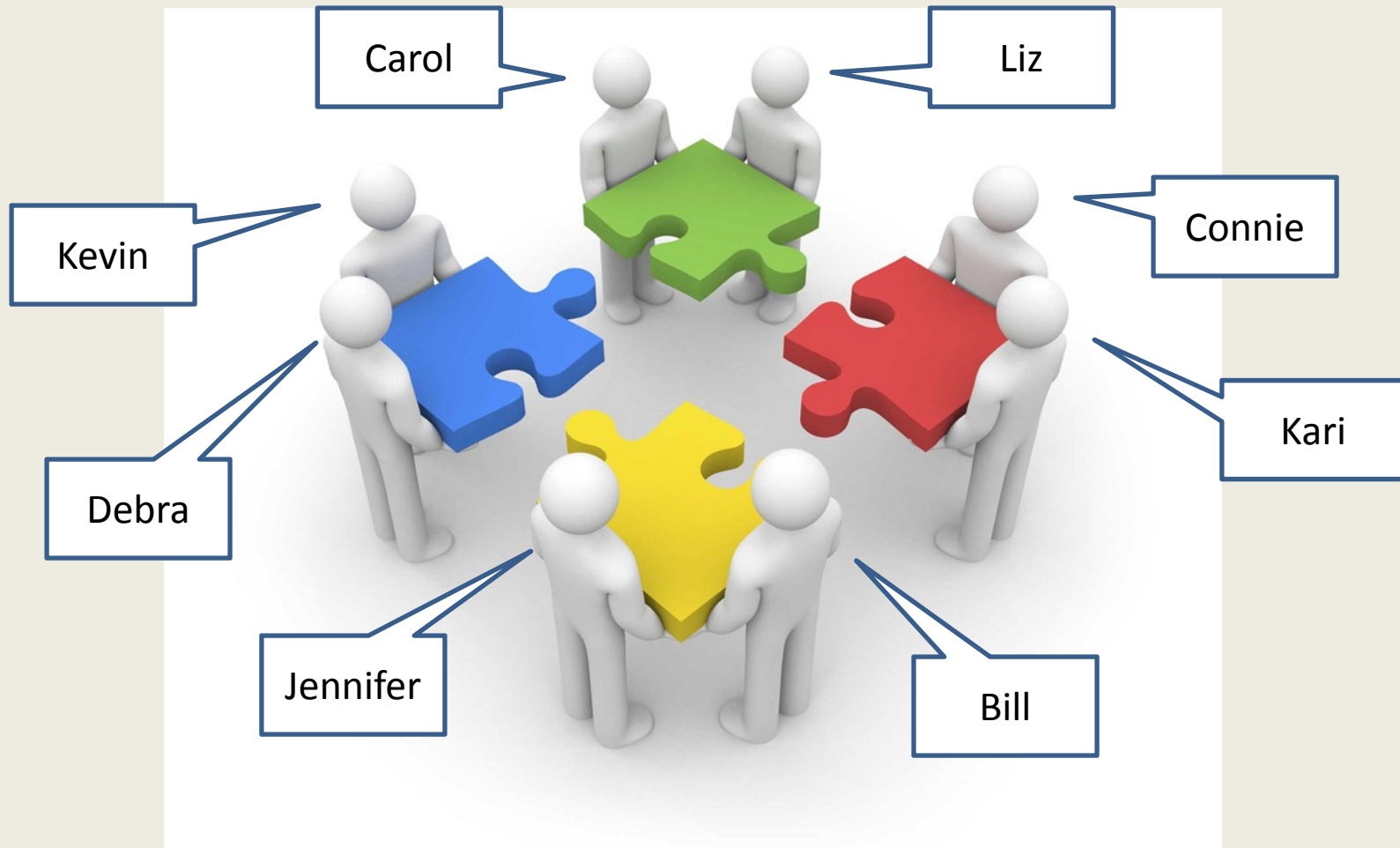
- Focus on where to accelerate change
- Engine of the Framework
- Priorities for investment
- Remain constant over time
- Communities will develop different approaches

Measures



- Illustrate progress
- Spark conversations and action
- Not all encompassing
- Focus on key changes
- Will evolve over time
- Skagit measures can map to Drivers and Action Areas

	Population Health Trust Advisory Committee Growing Healthy Communities (Mission)				
Action Areas	1. Making Health a Shared Value	2. Fostering Cross-sector Collaboration to Improve Wellbeing	3. Creating Healthier, More Equitable Communities	4. Strengthening Integration of Health Services and Systems	Action Areas
Drivers	<ul style="list-style-type: none">• Mindset and expectations• Sense of community• Civic engagement	<ul style="list-style-type: none">• Enumeration and quality of partnerships• Investment in cross-sector collaboration• Policies that support collaboration	<ul style="list-style-type: none">• Built environment/physical conditions• Social and economic environment• Policy and governance	<ul style="list-style-type: none">• Access• Consumer experience and quality• Balance and integration	Drivers
Outcomes	IMPROVED POPULATION HEALTH, WELL BEING AND EQUITY				Outcomes
	ENHANCED INDIVIDUAL AND COMMUNITY WELLBEING	MANAGED CHRONIC DISEASE AND REDUCED TOXIC STRESS		REDUCED HEALTH CARE COSTS	
	RWJ and Skagit County Measures				



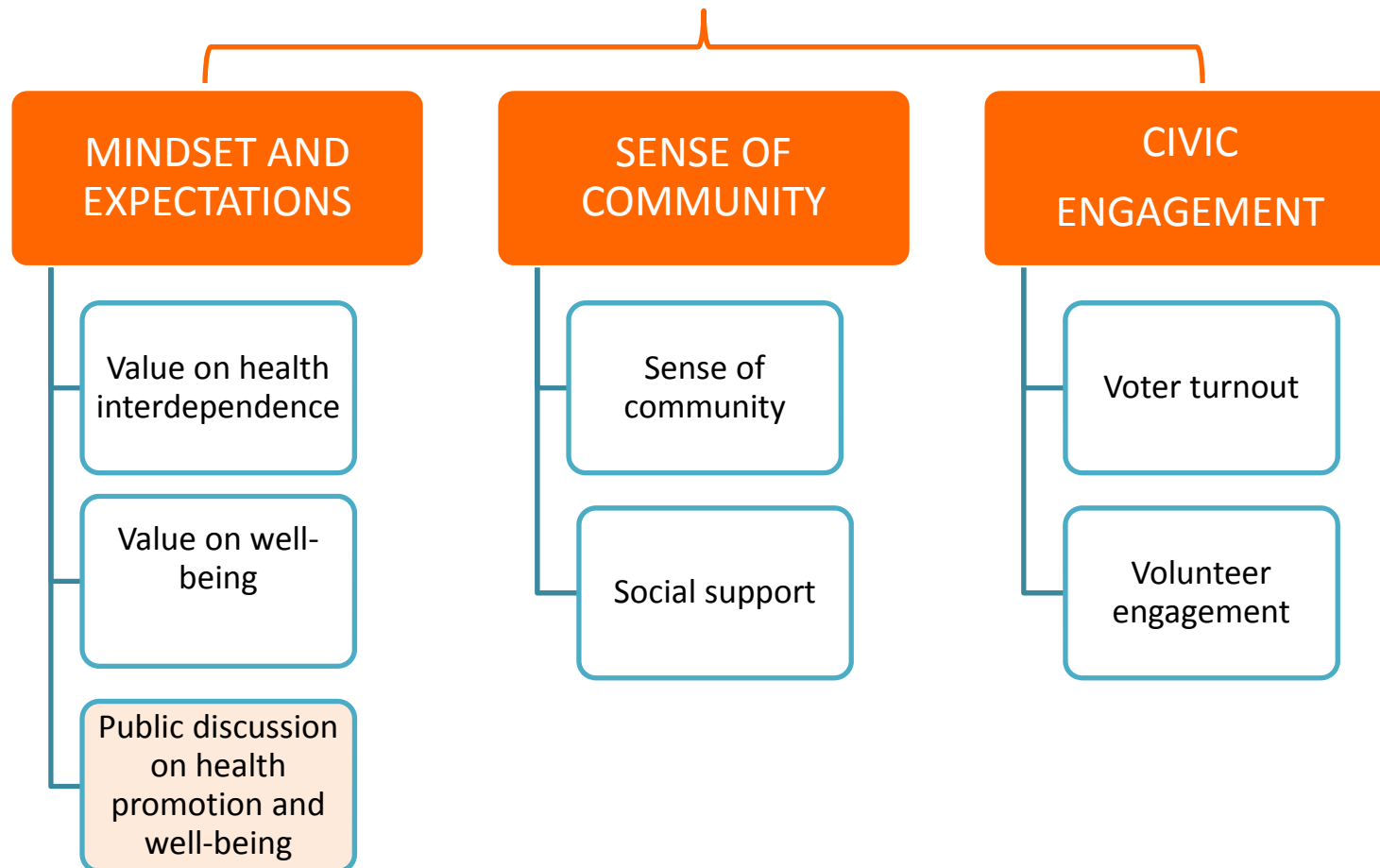
**POPULATION
HEALTH TRUST**
ADVISORY COMMITTEE

Skagit County Board of Health
Lisa Janicki, Chair
Kenneth A. Dahlstedt, Commissioner
Ron Wesen, Commissioner

1

Making Health a Shared Value

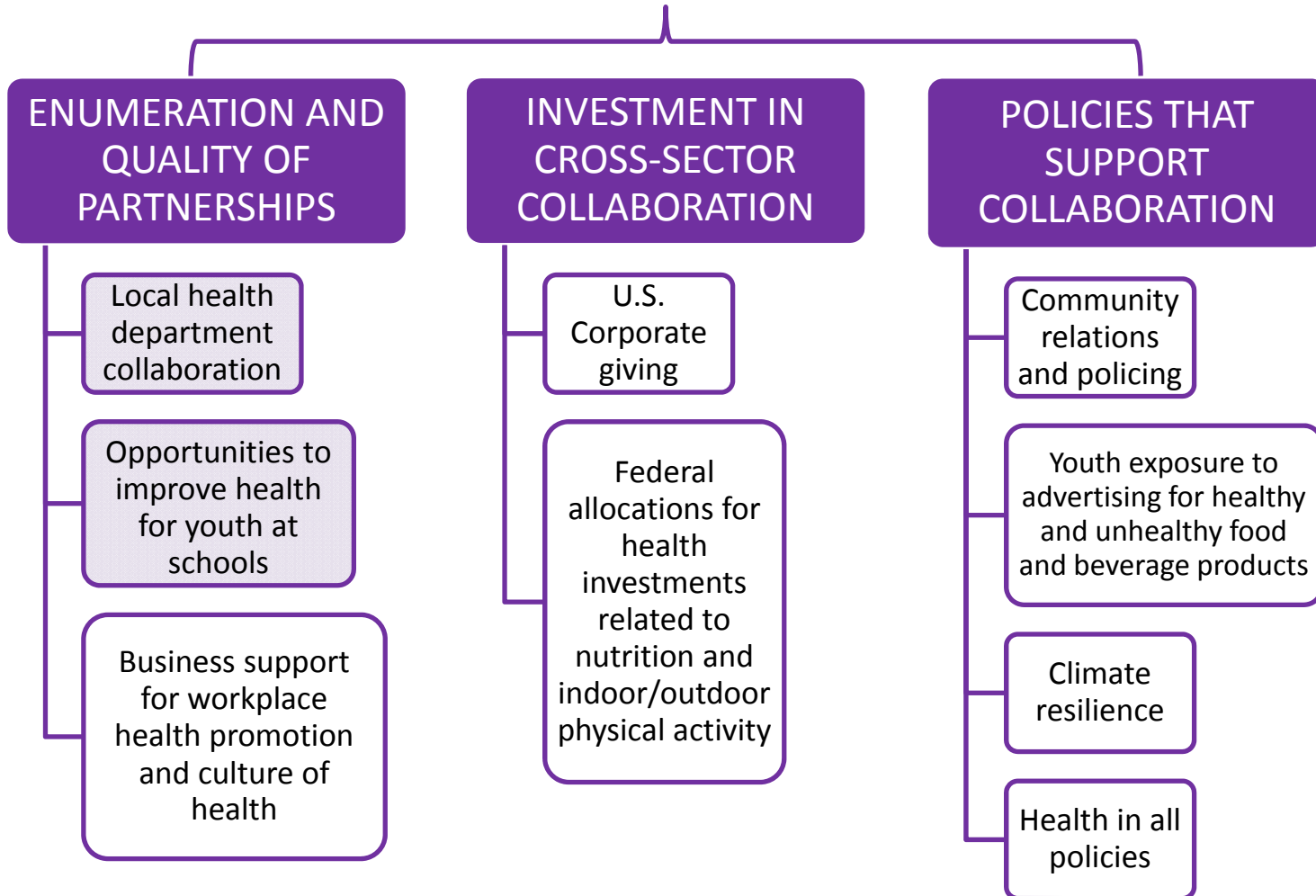
DRIVERS



2

Fostering Cross-sector Collaboration to Improve Well-being

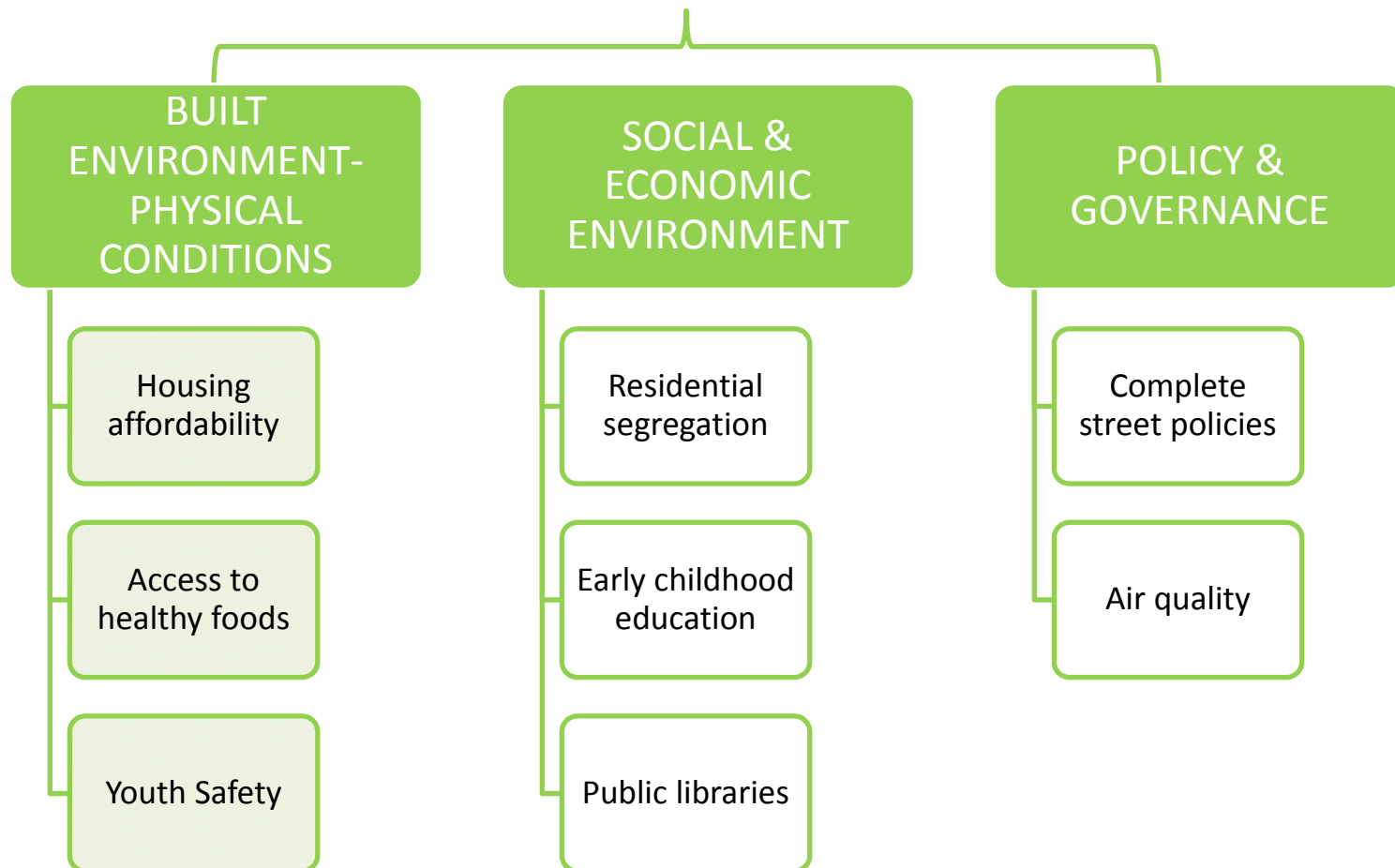
DRIVERS



3

Creating Healthier more Equitable Communities

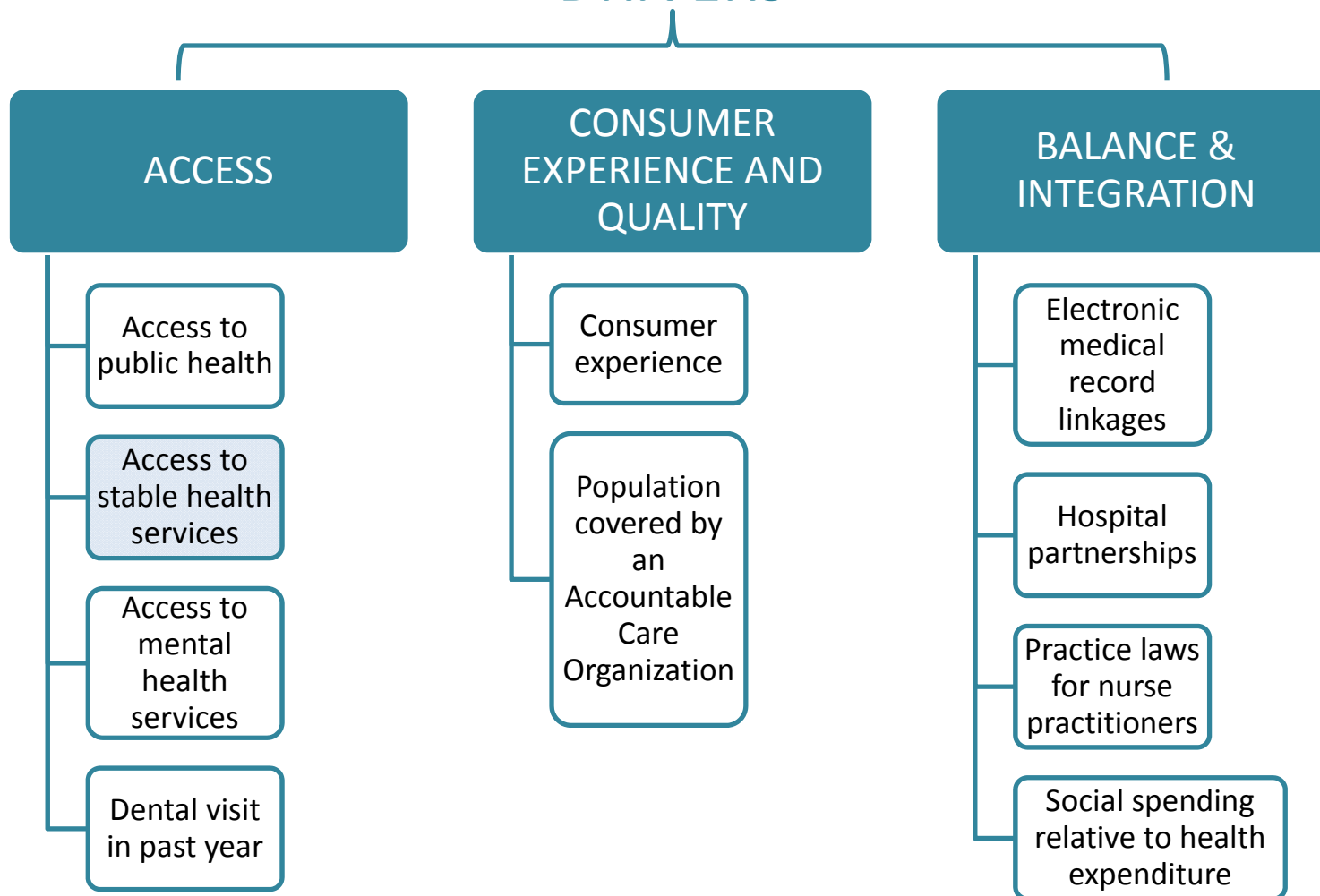
DRIVERS



4

Strengthening Integration of Health Services & Systems

DRIVERS



Discussion Questions

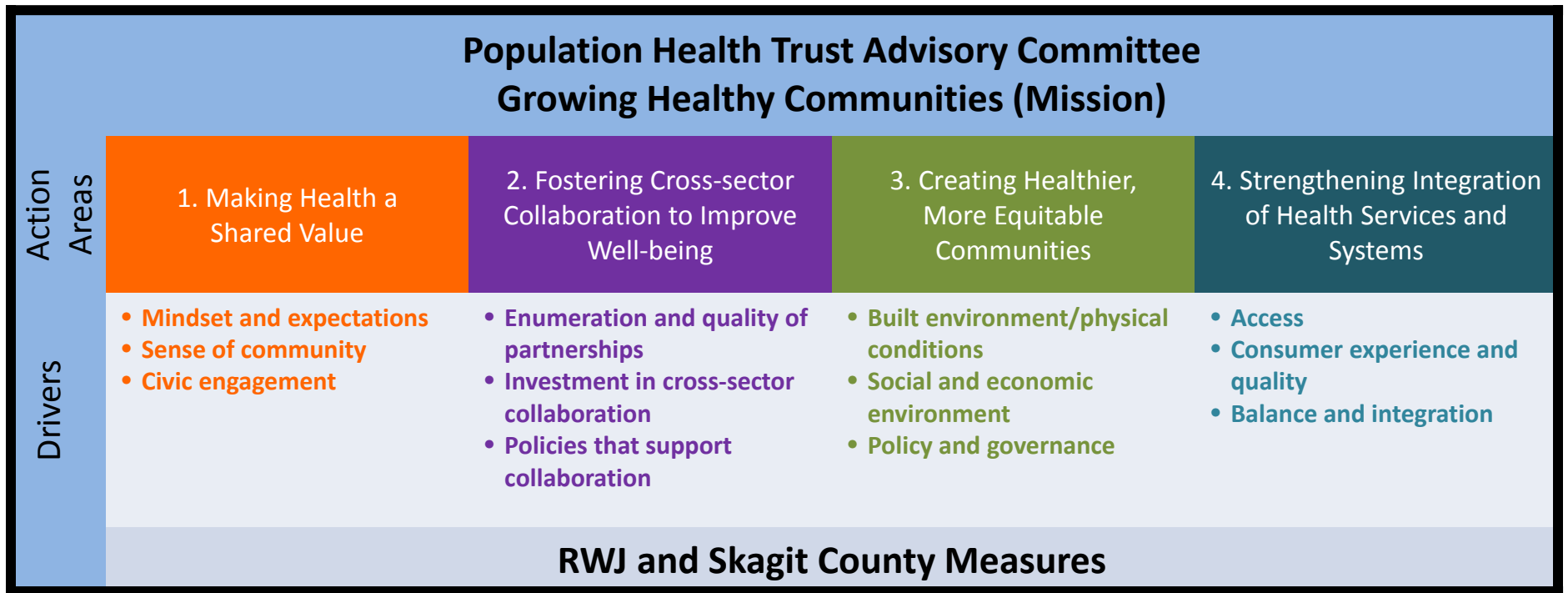
- How will this Framework serve our purpose?
- How can this help guide our work?
- How does your organization/service sector fit with this model?
- Can see how one of our Priority Areas could develop under this model?
- What are our unanswered questions?



Skagit County Board of Health - Population Health Trust

"Always working for a safer and healthier Skagit County"

*Lisa Janicki, Chair
Kenneth A. Dahlstedt, Commissioner
Ron Wesen, Commissioner*



Role and Governance to be clarified at next meeting

Steering Committee

- Communication
- Advocacy
- Awards
- Data
- Fiscal
- Membership

Pending Strategic Mapping for Skagit County Measures

1

Pending

Options

2

Youth Marijuana
Use

Options

2

Youth Depression &
Suicide Ideation

Options

2

Living Wage Jobs

Options

3

Access to Healthy
Foods

Options

3

Weight Status &
Active Living

Options

3

Youth Safety
(bullying & violence)

Options

3

Housing &
Affordability

Options

4

Access to Health Care
(routine &
preventative)

Options

4

Chlamydia Rate

Options

4

Immunization &
Screening

Options

4

Sufficient
Prenatal Care

Options

4

Opioid Problem
(Signature Item)

Options

Population Health Trust Advisory Committee Growing Healthy Communities (Mission)				
Action Areas	1. Making Health a Shared Value	2. Fostering Cross-sector Collaboration to Improve Well-being	3. Creating Healthier, More Equitable Communities	4. Strengthening Integration of Health Services and Systems
Drivers	<ul style="list-style-type: none"> • Mindset and expectations • Sense of community • Civic engagement 	<ul style="list-style-type: none"> • Enumeration and quality of partnerships • Investment in cross-sector collaboration • Policies that support collaboration 	<ul style="list-style-type: none"> • Built environment/physical conditions • Social and economic environment • Policy and governance 	<ul style="list-style-type: none"> • Access • Consumer experience and quality • Balance and integration
Measures	<ul style="list-style-type: none"> • Access to Healthy Foods 			

Skagit County
Priority Area
Strategic
Mapping Work

Weight Status &
Active Living

Options



Develop Strategic Map



Form PHT Led Community Based Subject Area Workgroup



Conduct an analysis of available resources and efforts addressing this concern



Explore gaps and opportunities for improvement



Review best and evidenced practices and policies



Identify key actions steps that will improve health in this area



Develop goals, menu of option, potential outcomes and suggested evaluation process



Publish strategy map and disseminate widely

Debra Lancaster motion on behalf of the Steering Committee

**Bill Henkel
Kari Ranten
Liz McNett Crowl
Carol Hawk
Debra Lancaster
Jennifer Johnson
Connie Davis
Kevin Murphy
David Jefferson**

**Former:
Mark Raaka
Andrea Doll**



Skagit County Board of Health - Population Health Trust

"Always working for a safer and healthier Skagit County"

*Lisa Janicki, Chair
Kenneth A. Dahlstedt, Commissioner
Ron Wesen, Commissioner*



Welcome Guest Speaker Lee Che Leong



Skagit County Board of Health
Lisa Janicki, Chair
Kenneth A. Dahlstedt, Commissioner
Ron Wesen, Commissioner

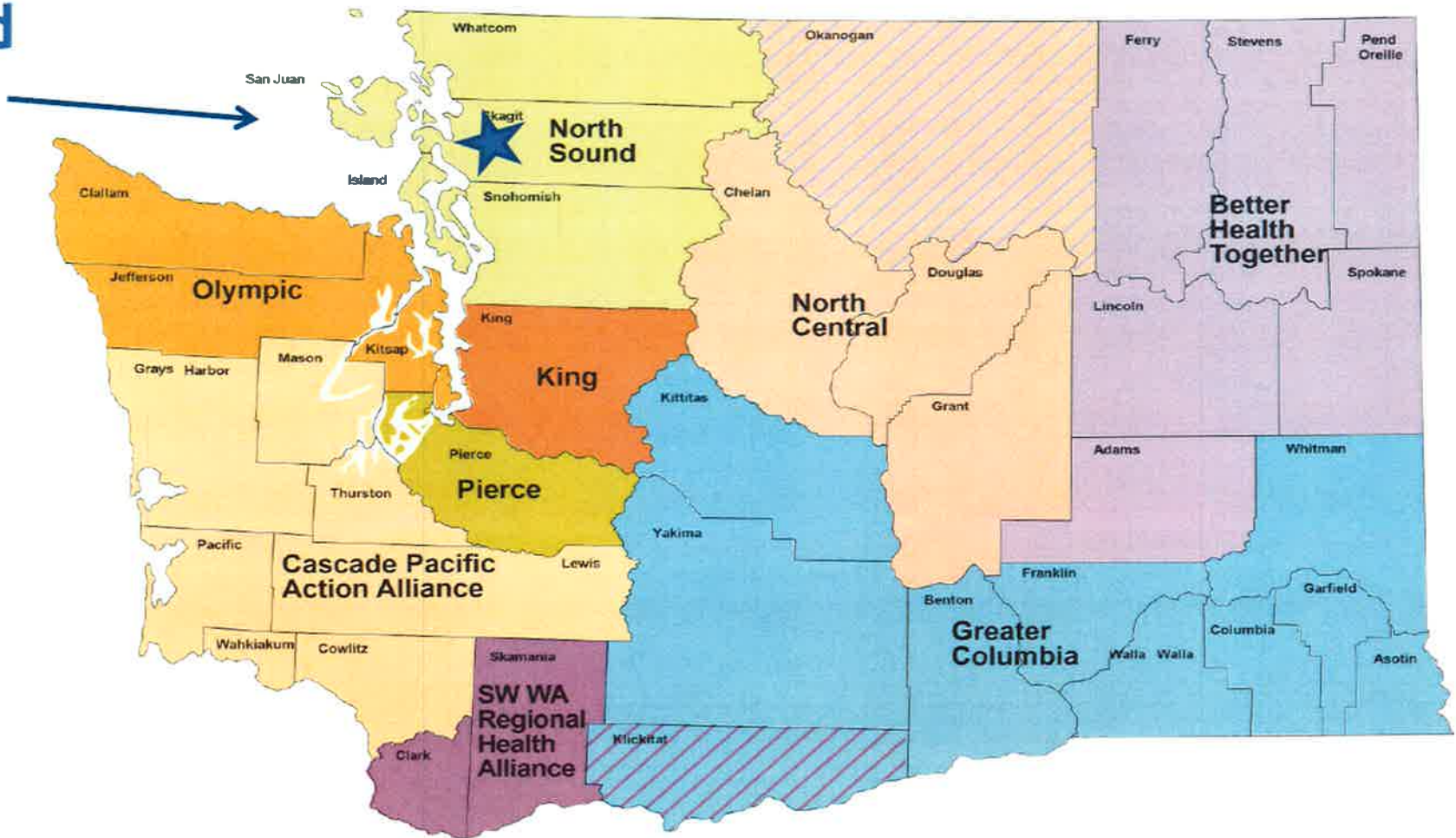
2016 to Date Update

Skagit Population Health Trust
September 1, 2016

Washington's ACHs

ACH Regions Map

**North
Sound
ACH**



Our Vision

A coalition with the triple aim of transforming the health system:

- to **improve the health** of our communities and our people
- to **improve the experience of care and access to care**
- and to **lower per capita health care costs**

in Snohomish, Skagit, San Juan, Island and Whatcom counties



Process

- All five counties in the region
 - 17 sectors participate
 - All 8 federally recognized Tribes in our region have been invited to participate
 - MCOs caucus around 1 vote
-

Governing Body, 1 of 2



Name	Title	Sector	Geographic area
Brian Burch	Group Health Cooperative	Commercial Plans	Regional
Kevin Collins, CDP, CCDCII	Health Service Director, Stillaguamish Tribe	Stillaguamish Tribe	Snohomish
Federico Cruz-Uribe, MD	VP of Clinical Affairs, SeaMar	Primary Care	Regional
Connie Davis, MD	Chief Medical Officer, Skagit Valley Hospital	Specialty Care, also Hospitals	Skagit
Regina Delahunt, MS	Director, Whatcom County Health Dept.	Public Health	Whatcom
Robin Fenn, PhD, LSW	Research Dir., Snohomish Human Serv.	SS&S, also Behavioral Health	Snohomish
Scott Forslund, MBA	Dir., Sno. County Health Leadership Coal.	At large, also Hospitals	Snohomish
Linda Gipson, PhD, RN	Chief Nursing Officer, Whidbey General	Hospitals	Island
Stephen Gockley, JD	<i>Retired, Northwest Justice Project</i>	Consumers	Whatcom
Gary Goldbaum, MD, MPH Vice Chair	Health Officer, Snohomish Health Dist.	Public Health	Snohomish
Erin Hafer	Community Health Plan of WA	Health Plan Caucus	Regional
Jennifer Johnson	Health Director, Skagit County	At large	Skagit
Tim Key	Everett Division Chief, EMS	First Responders	Snohomish
David Kincheloe, PhD	Advisory Board Vice-Chair, North Sound Mental Health Administration	Consumers, also Behavioral Health	Regional
Barbara LaBrash	Human Services Manager, San Juan County Government	SS&S	San Juan

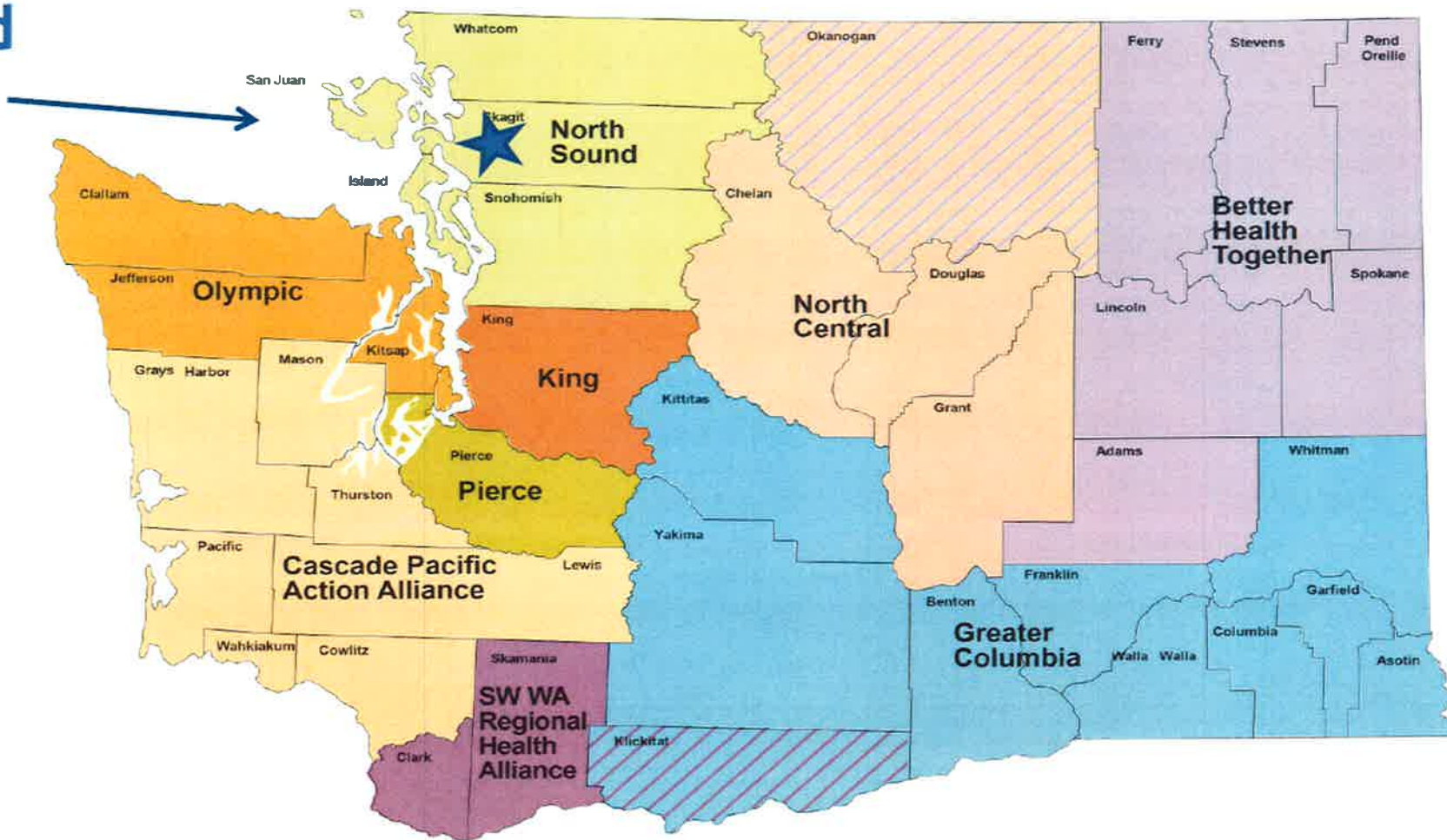
2016 to Date Update

Skagit Population Health Trust
September 1, 2016

Washington's ACHs

ACH Regions Map

**North
Sound
ACH**



Our Vision

A coalition with the triple aim of transforming the health system:

- to **improve the health** of our communities and our people
- to **improve the experience of care and access to care**
- and to **lower per capita health care costs**

in Snohomish, Skagit, San Juan, Island and Whatcom counties



Process

- All five counties in the region
 - 17 sectors participate
 - All 8 federally recognized Tribes in our region have been invited to participate
 - MCOs caucus around 1 vote
-

Governing Body, 1 of 2



Name	Title	Sector	Geographic area
Brian Burch	Group Health Cooperative	Commercial Plans	Regional
Kevin Collins, CDP, CCDCII	Health Service Director, Stillaguamish Tribe	Stillaguamish Tribe	Snohomish
Federico Cruz-Uribe, MD	VP of Clinical Affairs, SeaMar	Primary Care	Regional
Connie Davis, MD	Chief Medical Officer, Skagit Valley Hospital	Specialty Care, also Hospitals	Skagit
Regina Delahunt, MS	Director, Whatcom County Health Dept.	Public Health	Whatcom
Robin Fenn, PhD, LSW	Research Dir., Snohomish Human Serv.	SS&S, also Behavioral Health	Snohomish
Scott Forslund, MBA	Dir., Sno. County Health Leadership Coal.	At large, also Hospitals	Snohomish
Linda Gipson, PhD, RN	Chief Nursing Officer, Whidbey General	Hospitals	Island
Stephen Gockley, JD	<i>Retired, Northwest Justice Project</i>	Consumers	Whatcom
Gary Goldbaum, MD, MPH Vice Chair	Health Officer, Snohomish Health Dist.	Public Health	Snohomish
Erin Hafer	Community Health Plan of WA	Health Plan Caucus	Regional
Jennifer Johnson	Health Director, Skagit County	At large	Skagit
Tim Key	Everett Division Chief, EMS	First Responders	Snohomish
David Kincheloe, PhD	Advisory Board Vice-Chair, North Sound Mental Health Administration	Consumers, also Behavioral Health	Regional
Barbara LaBrash	Human Services Manager, San Juan County Government	SS&S	San Juan

Governing Body, 2 of 2



Name	Title	Sector	Geographic area
Barbara LaBrash	Human Services Manager, San Juan County Government	SS&S	San Juan
Linda McCarthy	Executive Director, Mt. Baker Planned Parenthood	Specialty Care	Whatcom, Skagit & San Juan
Dan Murphy	Executive Director, Northwest Regional Council	Long Term Care	Whatcom, Skagit, SJ & Island
Chris Phillips	Director for Community Affairs & Strategic Communications, Peace Health	Hospitals	Whatcom, Skagit, San Juan
Glenn Puckett, MPA	Senior Program Officer, Washington Dental Service Foundation	Specialty Care, also Philanthropy	Regional
Cheryl Sanders	Vice Chair, Lummi Nation	Lummi Nation	Whatcom
Marilyn Scott	Vice Chair, Upper Skagit Tribe	Upper Skagit Tribe	Skagit
Jason Smith, MA	Dean of Health Sciences & Public Safety, Everett Community College	Education	Snohomish
John Stephens	Programs Administrator, Swinomish Tribe	Swinomish Tribe	Skagit
Joe Valentine, MSW Chair	Executive Director, North Sound Behavioral Health Organization	Behavioral Health	Regional
Kim Williams, RN	Chief Operating Officer, Providence	Hospitals	Snohomish
Greg Winter	Executive Dir. Opportunity Council	SS&S, also Housing	Island, SJ & What

2016 to Date Update

Skagit Population Health Trust
September 1, 2016

Washington's ACHs

ACH Regions Map

**North
Sound
ACH**



Our Vision

A coalition with the triple aim of transforming the health system:

- to **improve the health** of our communities and our people
- to **improve the experience of care and access to care**
- and to **lower per capita health care costs**

in Snohomish, Skagit, San Juan, Island and Whatcom counties



Process

- All five counties in the region
 - 17 sectors participate
 - All 8 federally recognized Tribes in our region have been invited to participate
 - MCOs caucus around 1 vote
-

Governing Body, 1 of 2



Name	Title	Sector	Geographic area
Brian Burch	Group Health Cooperative	Commercial Plans	Regional
Kevin Collins, CDP, CCDCII	Health Service Director, Stillaguamish Tribe	Stillaguamish Tribe	Snohomish
Federico Cruz-Uribe, MD	VP of Clinical Affairs, SeaMar	Primary Care	Regional
Connie Davis, MD	Chief Medical Officer, Skagit Valley Hospital	Specialty Care, also Hospitals	Skagit
Regina Delahunt, MS	Director, Whatcom County Health Dept.	Public Health	Whatcom
Robin Fenn, PhD, LSW	Research Dir., Snohomish Human Serv.	SS&S, also Behavioral Health	Snohomish
Scott Forslund, MBA	Dir., Sno. County Health Leadership Coal.	At large, also Hospitals	Snohomish
Linda Gipson, PhD, RN	Chief Nursing Officer, Whidbey General	Hospitals	Island
Stephen Gockley, JD	<i>Retired, Northwest Justice Project</i>	Consumers	Whatcom
Gary Goldbaum, MD, MPH Vice Chair	Health Officer, Snohomish Health Dist.	Public Health	Snohomish
Erin Hafer	Community Health Plan of WA	Health Plan Caucus	Regional
Jennifer Johnson	Health Director, Skagit County	At large	Skagit
Tim Key	Everett Division Chief, EMS	First Responders	Snohomish
David Kincheloe, PhD	Advisory Board Vice-Chair, North Sound Mental Health Administration	Consumers, also Behavioral Health	Regional
Barbara LaBrash	Human Services Manager, San Juan County Government	SS&S	San Juan

Governing Body, 2 of 2



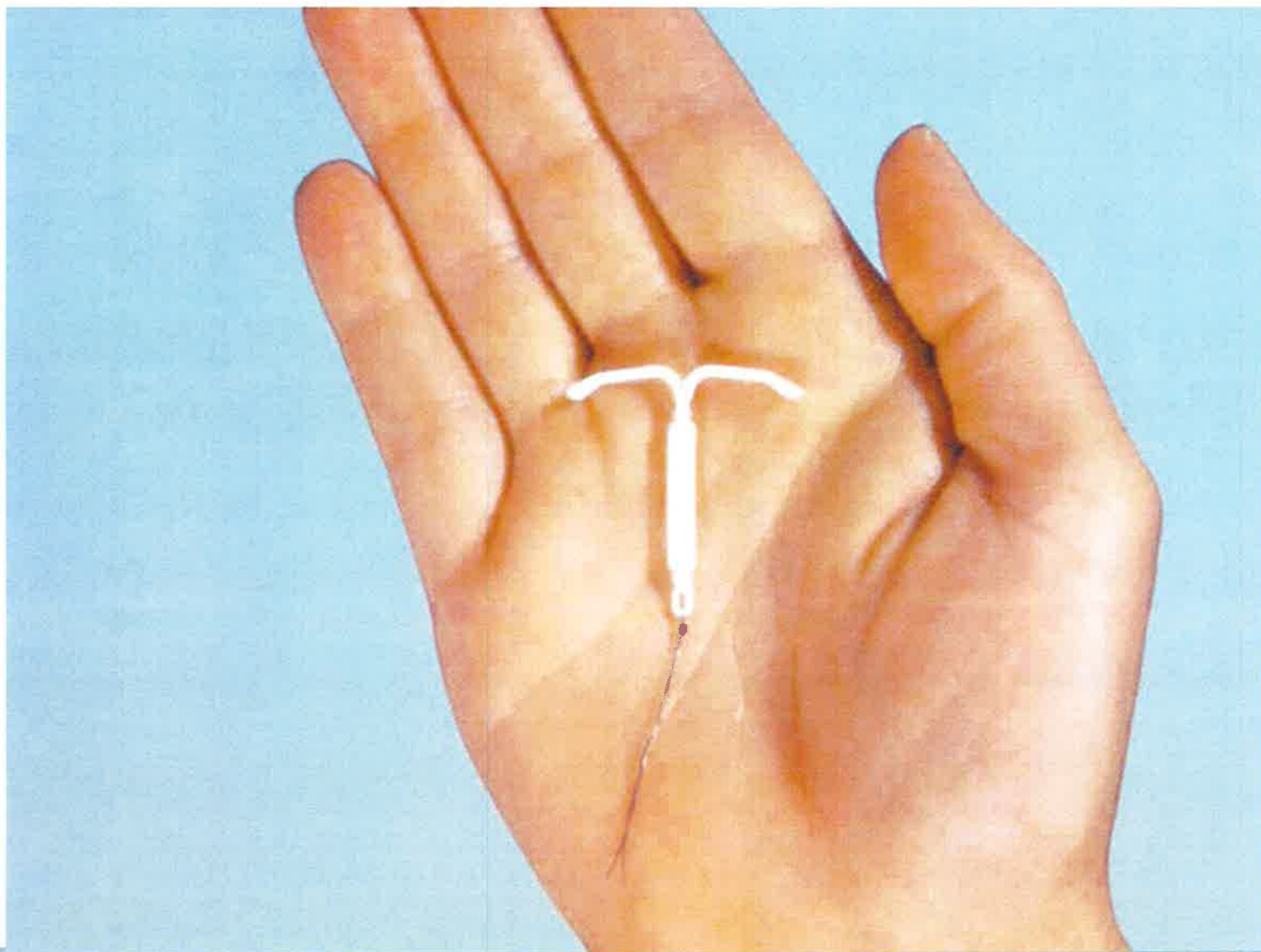
Name	Title	Sector	Geographic area
Barbara LaBrash	Human Services Manager, San Juan County Government	SS&S	San Juan
Linda McCarthy	Executive Director, Mt. Baker Planned Parenthood	Specialty Care	Whatcom, Skagit & San Juan
Dan Murphy	Executive Director, Northwest Regional Council	Long Term Care	Whatcom, Skagit, SJ & Island
Chris Phillips	Director for Community Affairs & Strategic Communications, Peace Health	Hospitals	Whatcom, Skagit, San Juan
Glenn Puckett, MPA	Senior Program Officer, Washington Dental Service Foundation	Specialty Care, also Philanthropy	Regional
Cheryl Sanders	Vice Chair, Lummi Nation	Lummi Nation	Whatcom
Marilyn Scott	Vice Chair, Upper Skagit Tribe	Upper Skagit Tribe	Skagit
Jason Smith, MA	Dean of Health Sciences & Public Safety, Everett Community College	Education	Snohomish
John Stephens	Programs Administrator, Swinomish Tribe	Swinomish Tribe	Skagit
Joe Valentine, MSW Chair	Executive Director, North Sound Behavioral Health Organization	Behavioral Health	Regional
Kim Williams, RN	Chief Operating Officer, Providence	Hospitals	Snohomish
Greg Winter	Executive Dir. Opportunity Council	SS&S, also Housing	Island, SJ & What

Regional Priorities

Based on analysis of CHA and CHNAs, other health assessments, Inventory of Health Initiatives, Qualitative Interviews and Community Forums:

- **Behavioral Health**
 - **Care Coordination** for High Utilizers
 - **Health Disparities** (primary consideration for the other 5)
 - **Housing**
 - **Oral Health**
 - **Prevention**
-

Early Win: Prevention



LARC Project Outcomes



- Decreased unintended pregnancy rates (State Common Measure #2)
- Increased provider and consumer awareness of LARC as most effective contraceptive options
- Increased provider capacity to provide LARC to female patients at patient discretion
- Increased use of LARC
- Decreased Medicaid spending per enrollee (#51)

LARC Proposal

1) **Provider training** on how to:

- utilize client centered contraceptive counseling best practices
- incorporate reproductive life planning
- clarify pregnancy intentions,
- and inserting/implanting LARC when patients choose.

2) **Outreach to women** to:

- increase awareness of their contraceptive options
 - including risk/benefit information regarding LARCs

LARC Support

- **September 15 training for 30 to 45 providers**
 - **Please spread the word!**
 - *We're also looking for proctors*
 - Clinicians from 4 counties registered
-

Thank You!



Questions about the North Sound ACH?

Contact:

Lee Che P. Leong

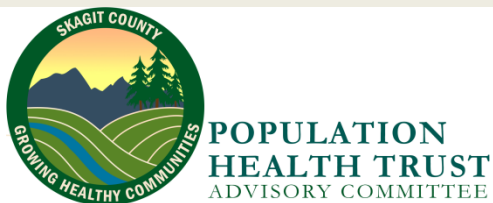
NorthSoundACH.org

LPLeong@hinet.org

360.788.6570

Opioid Leadership Workgroup Team Update

- Welcome Randy Elde



Skagit County Board of Health
Lisa Janicki, Chair
Kenneth A. Dahlstedt, Commissioner
Ron Wesen, Commissioner

OWLT

OPIOID WORKGROUP LEADERSHIP TEAM

Convening knowledgeable community stakeholders
Assessing services to uncover efforts already underway
Review and identify gaps and opportunities
Review evidenced-based practices that could be expanded or added
Develop a strategy map that describes changes
Present a draft improvement plan to the Trust and public

OWLT

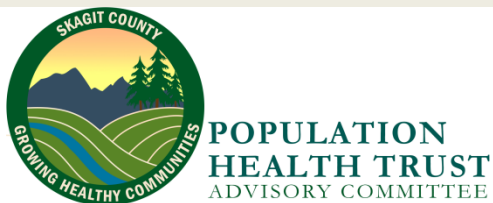
- Washington State Interagency Opioid Working Plan Goals:

- *Prevent opioid misuse and abuse*
- *Treat opioid dependence*
- *Prevent deaths from overdose*
- *Use data to monitor and evaluate*

- stopoverdose.org

Volunteers Needed

- Start Fiscal Sub Committee
- Start Award Sub Committee



Skagit County Board of Health
Lisa Janicki, Chair
Kenneth A. Dahlstedt, Commissioner
Ron Wesen, Commissioner

Last Items

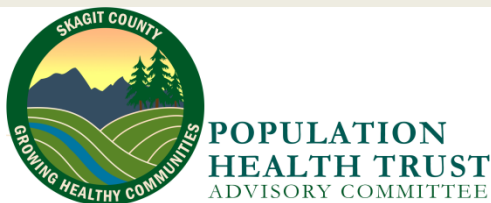
- Brief discussion about having guest speakers
- Content for upcoming meetings
- Rollout of plans for Strategic Mapping
- Closing Remarks



Skagit County Board of Health
Lisa Janicki, Chair
Kenneth A. Dahlstedt, Commissioner
Ron Wesen, Commissioner

Next Trust Meeting

- EMS Building
- October 6th, 2016
- Time: 8:30 to 12:00



Skagit County Board of Health
Lisa Janicki, Chair
Kenneth A. Dahlstedt, Commissioner
Ron Wesen, Commissioner